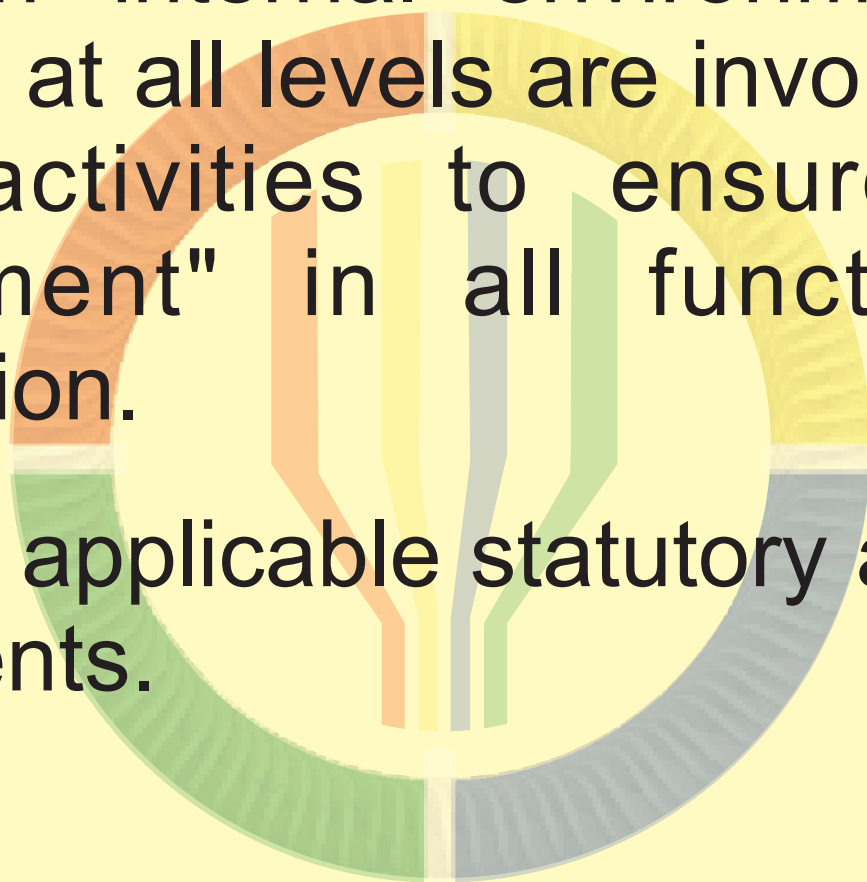


# QUALITY POLICY

We, at Worldwind Heavy Electricals LLP shall,

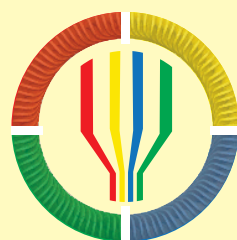
- Understand and meet Customer requirements and be responsive to their ever changing needs
- Create an internal environment in which personnel at all levels are involved in Quality related activities to ensure "Continual Improvement" in all functions of our Organization.
- Adhere to applicable statutory and regulatory requirements.



*Bulkarani*

General Manager

Date : 01/08/2019



**Worldwind**  
Heavy Electricals

**WORLDWIND HEAVY ELECTRICALS LLP**

Gat No. 1215, Pune - Saswad Road, Wadaki,  
Pune 412 308, Maharashtra, India

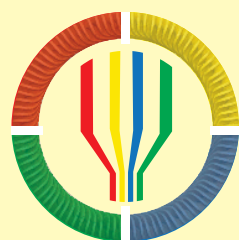
# QUALITY OBJECTIVES

- Enhance Customer Satisfaction
- Upgrade Employee skills
- Efficient Utilization of resources
- Safe Working Environment
- Continual Improvement in all Processes



Date : 01/08/2019

*Bulkarni*  
General Manager



**Worldwind**  
Heavy Electricals

**WORLDWIND HEAVY ELECTRICALS LLP**

Gat No. 1215, Pune - Saswad Road, Wadaki,  
Pune 412 308, Maharashtra, India